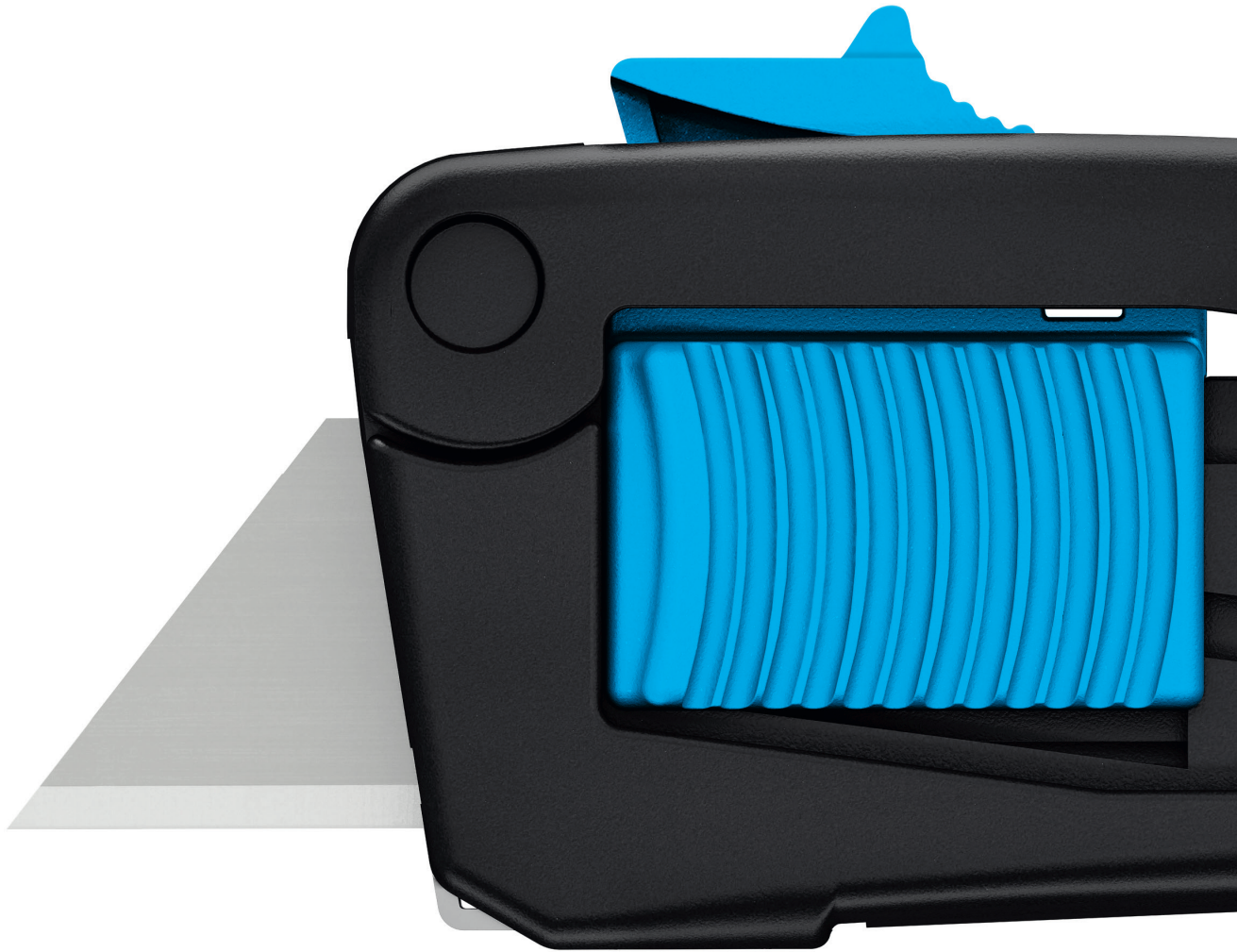


SECUPRO MAXISAFE

IMPORTANT NEW FEATURES. RELIABLY FAMILIAR.

NEW



ENJOY SAFETY  
MADE IN SOLINGEN

**martor**

# SECUPRO MAXISAFE

NO. 10139910

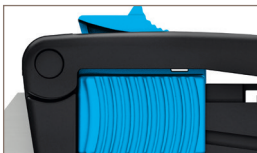


Original size



#### Ergonomic handle

The plastic handle now sits even better in the hand thanks mainly to the new shape of the knife's back. The slider and blade change button have also been improved for efficient operation..



#### 3-sided slider

From the right? From the left? From above? Regardless of how you want to activate the blade, all options are available with the SECUPRO MAXISAFE. What's more, the 3-sided slider is now grooved for better grip.



#### At the press of a button

Your two hands alone are enough to change the blade. And these short instructions: press the blade change button and swing open the handle. Push the blade carrier to the front and you can change the blade. It's that easy.



#### Metal guard

SECUPRO MAXISAFE is not afraid of a little friction. A metal abrasion protection shield, found on the underside of the knife head, works to prevent any general wear and tear as you cut your path through the day.



#### Double-edged blade








Don't change your blade the moment the tip turns blunt. Double the usage time of your blades and minimize wastage by always remembering to flip them over. Don't forget: there are two sides to every blade!

**Perfect handling – from every side.  
With trapezoid blade.**

The SECUPRO MAXISAFE has been making an impression for more than 15 years due to its lightness and wide range of applications. The safety knife has now reached new levels of ergonomic design. Just hold the 3-sided slider in your hand and try it out ... notice the difference? And it still has all the tried and tested features – such as fully automated blade retraction and a robust handle made from high-quality plastic.

**PRODUCT FEATURES**


**Technical features**

	Very high safety		Tool-less blade change
	Abrasion resistant		Ergonomic
	2-cutting edge blade		Cutting depth
	Ceramic blade insertable		For right and left handers
	Lanyard hole		Printable for promotional purposes

**Main cutting materials**

	Cardboard: up to 3-ply		Plastic strapping band
	Tape		Layers of foil or paper
	Wrapping, stretch, and shrink foil		Yarn, cord

**Installed blade**

	<b>NO. 99</b>	0.63 mm, deep-edged
--	---------------	---------------------

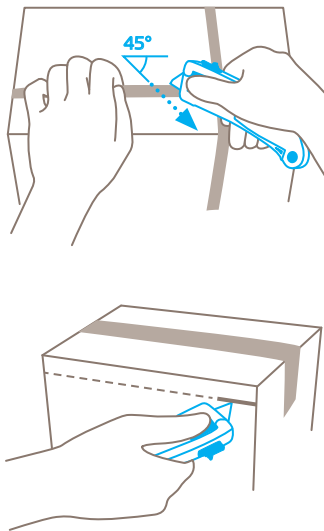
**Optional blade**

	<b>NO. 60099C</b>	0.65 mm, ceramic, rounded blade tips, deep-edged
	<b>NO. 99</b>	0.63 mm, deep-edged
	<b>NO. 199</b>	0.63 mm, deep-edged, stainless
	<b>NO. 98</b>	0.63 mm

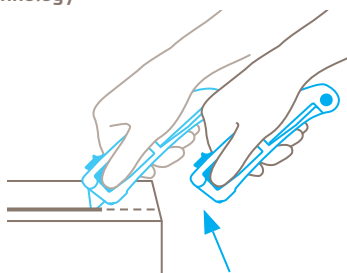
**Certificates and awards**



**Application**



**Safety technology**



**Fully automatic blade retraction – a very high degree of safety**






The fully automatic blade retraction of the SECUPRO MAXISAFE guarantees a very high degree of safety from cut injuries. The blade withdraws into the handle the moment it leaves the material being cut. Even when the slider is being held forward.

# THE PERFECT FIT FOR ALL. DOES THE PERFECT JOB.

## SECUPRO MAXISAFE

- › With 3-sided slider
- › Fully automatic blade retraction
- › Notable cutting depth (cuts up to 3-ply cartons)
- › Metal abrasion protection shield
- › GS-certified for approved safety

## PRODUCT DETAILS

<b>Order No.</b>	NO. 10139910.02
<b>Packaging unit</b>	1 in single unit box (10 in multipack)
<b>Knife size (L x W x H)</b>	148 x 18 x 42 mm
<b>Main material</b>	Glass fibre reinforced plastic
<b>Weight</b>	64.0 g
<b>Cutting depth</b>	17.2 mm
<b>Spare blade Packaging unit Size (L x W x Thickness)</b>	NO. 99.70 (10 in dispenser) 60 x 19 x 0.63 mm
<b>Certified</b>	GS certificate NO. 603523- 6639-55094-2018
<b>Accessories</b>	
BELT HOLSTER S WITH CLIP	 NO. 9920
HOLSTER LARGE	 NO. 9843
USED BLADE CONTAINER	 NO. 9810
WALL MOUNT BRACKET USED BLADE CONTAINER	 NO. 9845
SAFEBOX	 NO. 108000

## CONTACT AND SERVICE

What makes our cutting solutions even safer?  
Our advisory services! We are always on hand,  
to give advice, to provide you with training ma-  
terial, to meet with you in person if necessary.

You will find further information on our website:  
[www.martor.com](http://www.martor.com)



At a glance: the safety poster shows the most important functions and correct usage – perfect for your workplace.



From the first cut to changing the blade, our video will show you the best way to use this knife.



Everything you want to know: dimensions, prop-  
erties, special features and more about our cutting  
tools can be found in the technical data sheet.



Still have questions? You can reach our service  
department on [+49 212 73870-0](tel:+49212738700)